

Practical applications of Virtual Reality: From visualization to training

Marios N. Avraamides

marios@silversky3d.com





silversky



We provide services to professionals and scientists who can benefit from advanced visualization and interaction with virtual environments.



Architecture
Interior Design
Real Estate

- Accurate models of buildings from architectural plans
- Real-time manipulation of virtual products
- Visualization of alternative interior design solutions
- Web-based virtual tours of existing spaces



Basic Research
Applied Research

- Behavioral experiments
- Interaction with synthetic agents
- Spatial memory and navigation
- Recordings of physiological data

Health
Training

- Social skills training
- Clinical and psychological interventions
- Visualization of healthcare data
- Search-and-Rescue training



Education
Culture

- Virtual museums and exhibits
- Educational games

UNIVERSITY OF CYPRUS

THE EXPERIMENTAL PSYCHOLOGY LAB

At the Experimental Psychology Lab (EPL) of the University of Cyprus we do research on human cognition. We are primarily interested in examining how people encode, represent, and maintain spatial information in memory, as well as how they use that information to carry out tasks of everyday life such as navigation and orientation. But, we do other things too so if you want to learn more, just click on the link below.

[LEARN MORE](#)



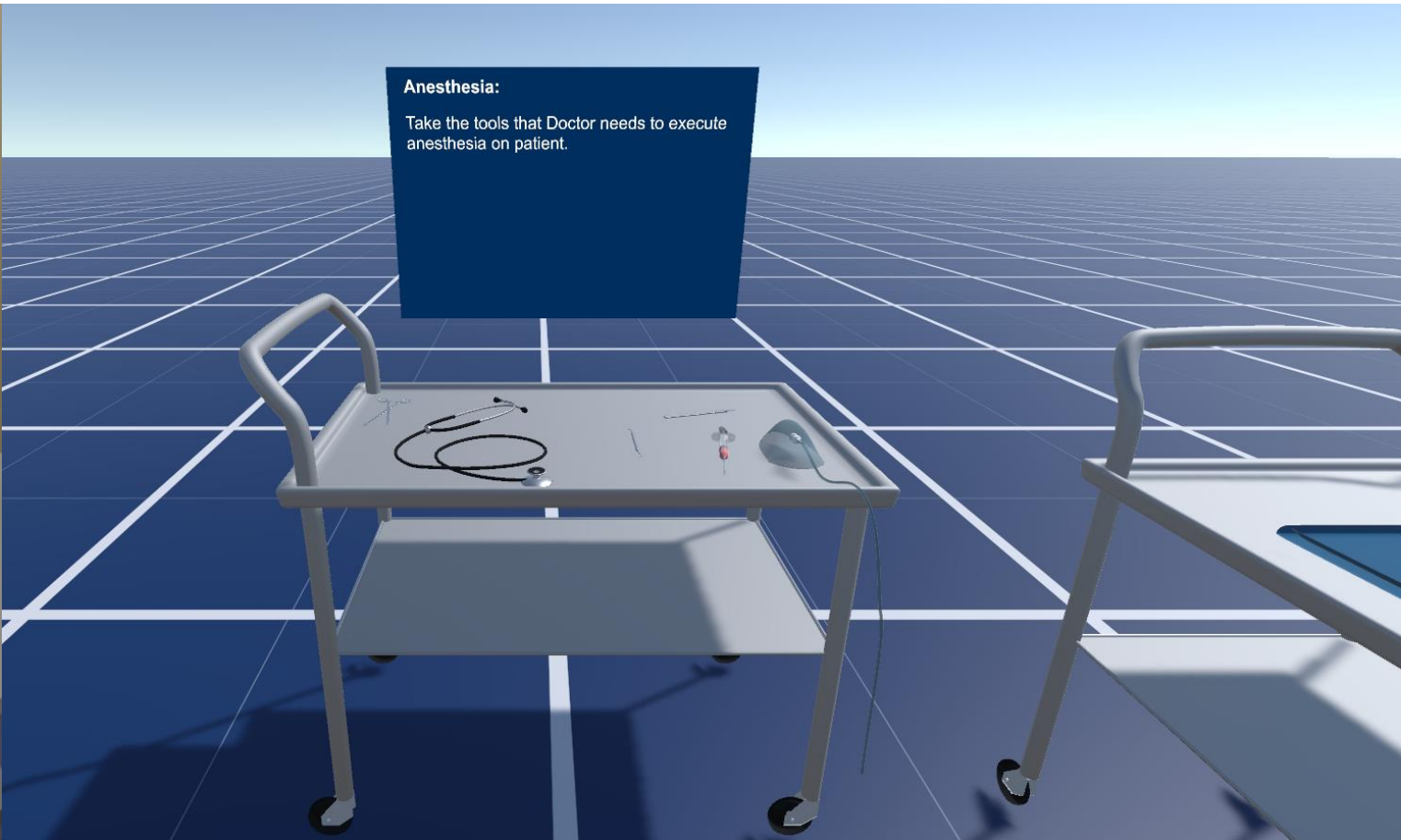
An example: Place recognition in ageing and dementia



Benefits of VR

- Ecological validity & laboratory control
- Data: assessment & training
- Remote access: home/office use, self-administered
- Teaching: better visualization





Anesthesia:

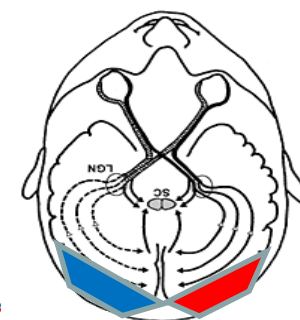
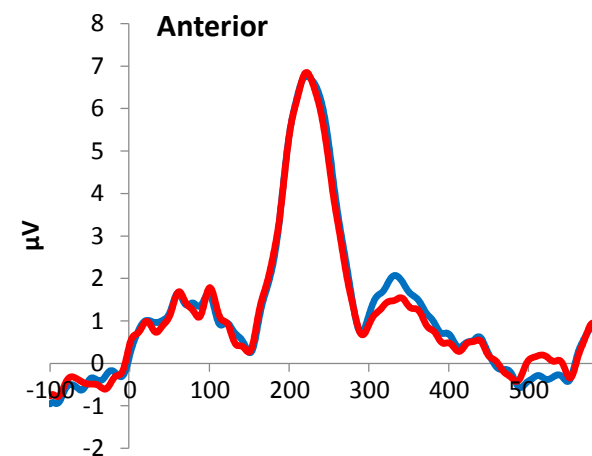
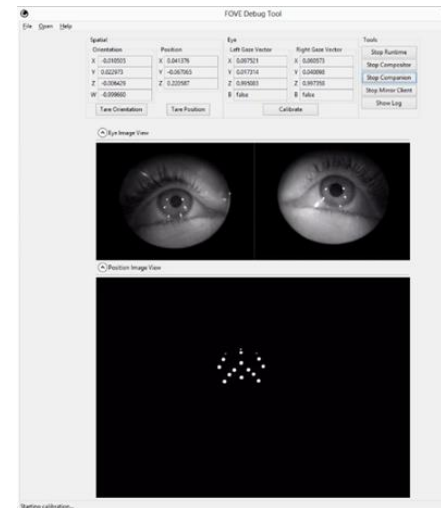
Take the tools that Doctor needs to execute anesthesia on patient.





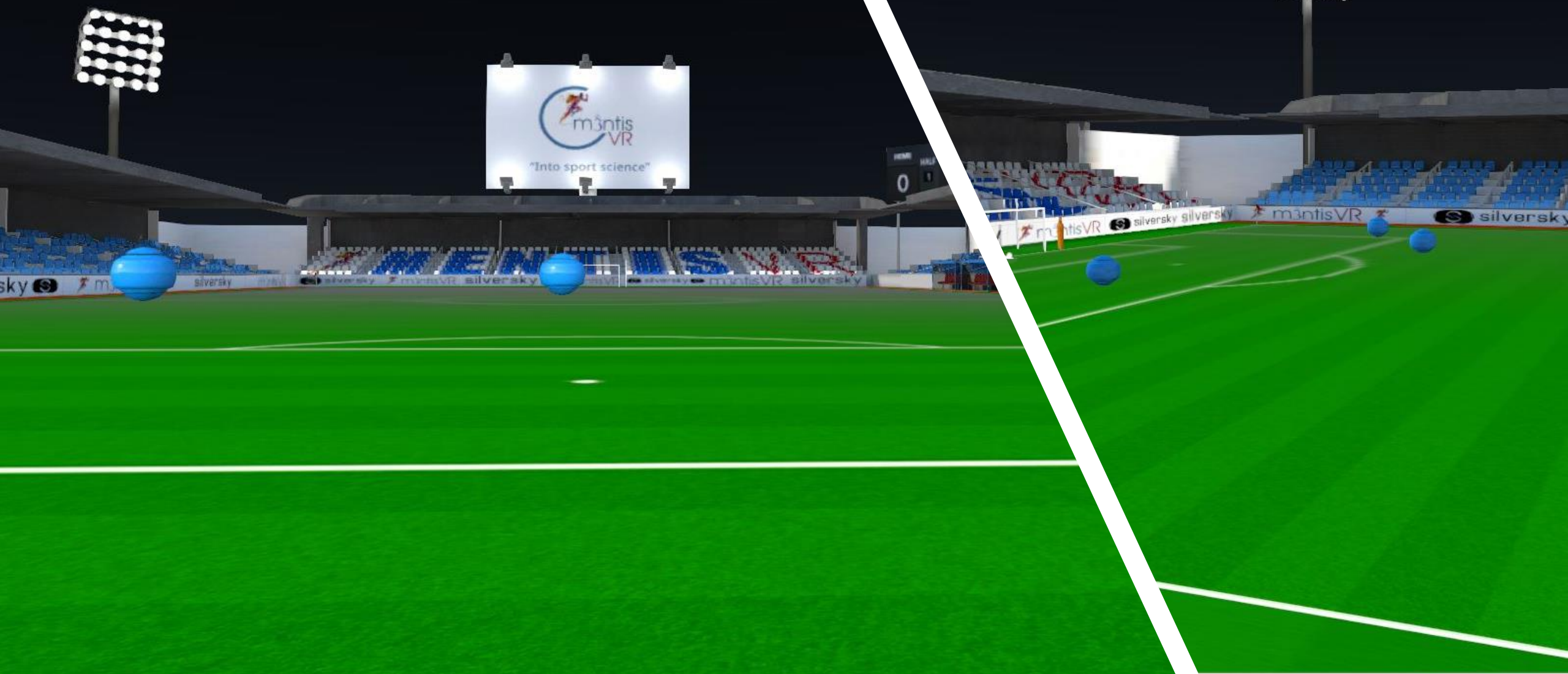
















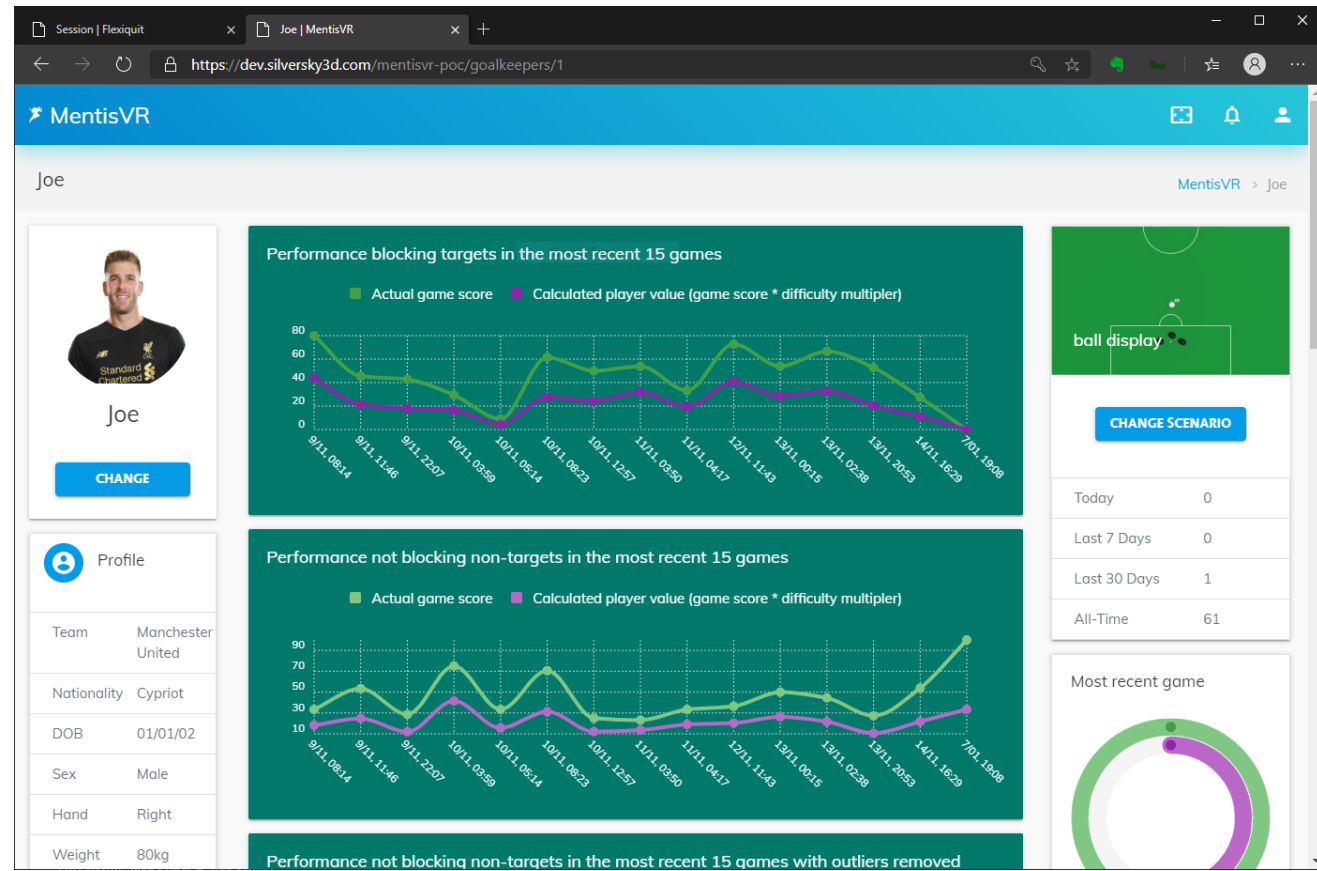
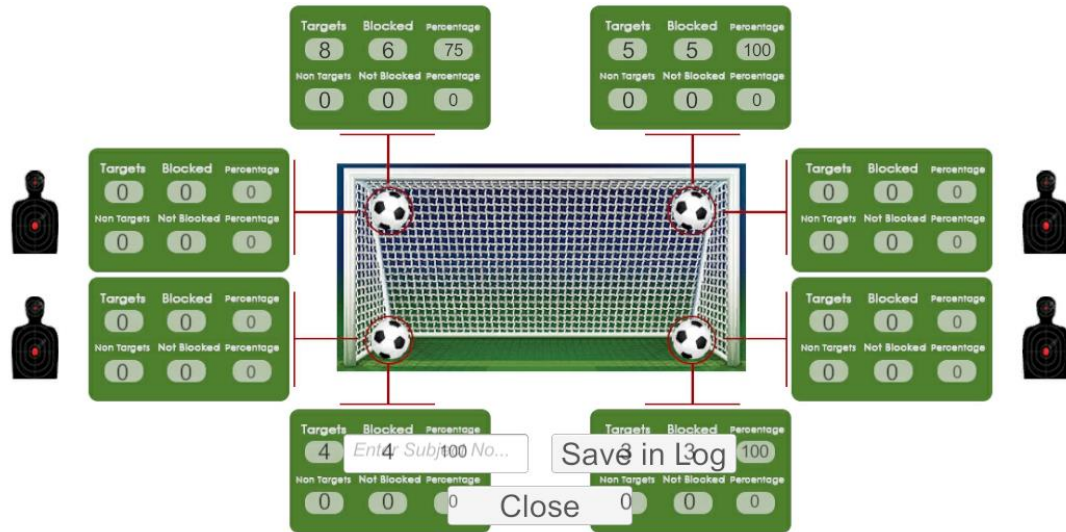
Πανεπιστήμιο Κύπρου
University of Cyprus



Go/No-Go

Performance is predicted by
cognitive skills

Data is king!





THANK YOU!



silversky

marios@silversky3d.com